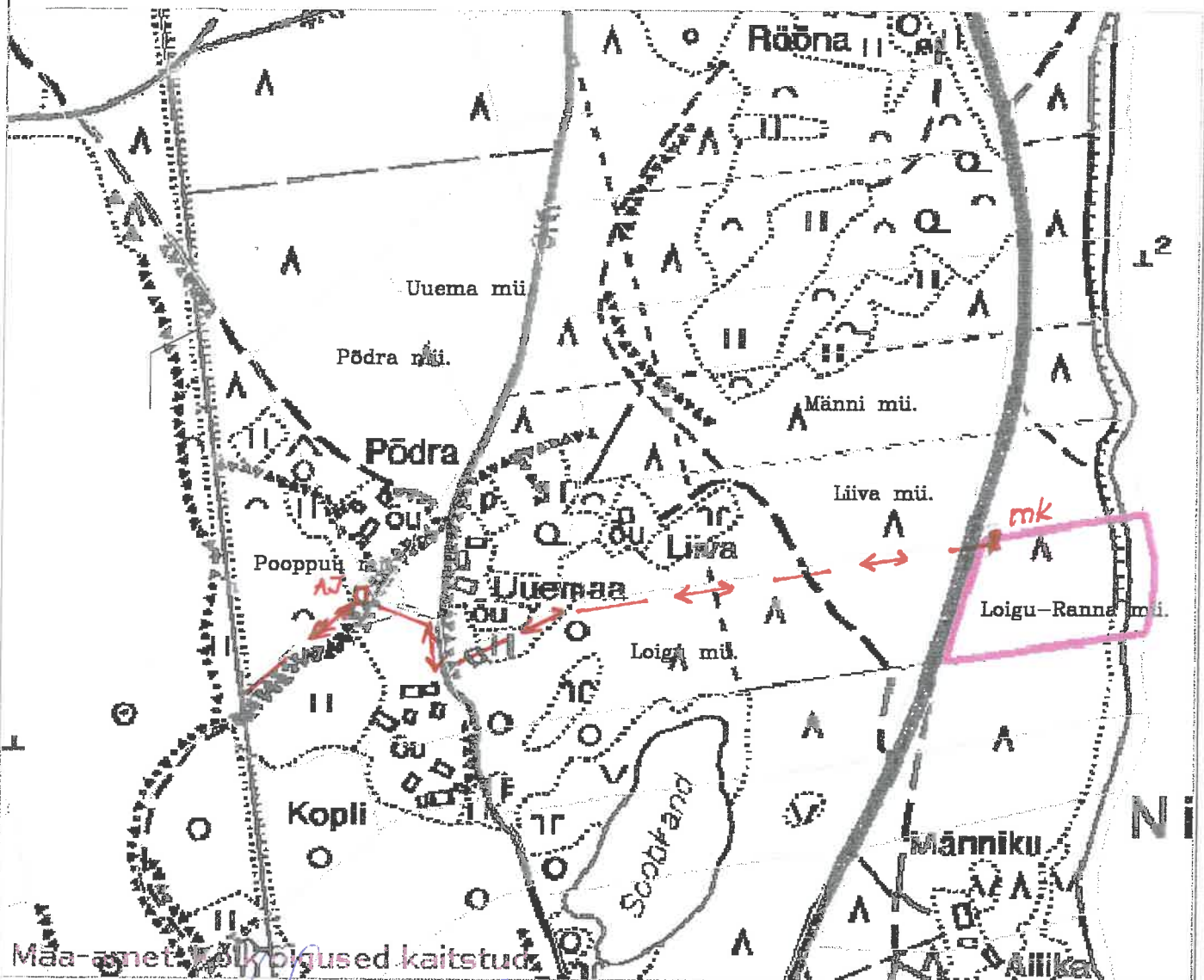







SAAREMAA, MUSTJALA VALD, NINASE KÜLA, LOIGU-RANNA MAAÜKSUSE DETAILPLANEERING.



Poopuu mü. juht HENNO ALV

 — planeeritud 10kV kaabel
 — planeeritud 0,4kV kaabel

 KURESSAARE KOMMUNAALPROJEKT			32-05-DP	4
Juhataja	A. Rand		Tellija: Mustjala Vallavalitsus	
Koostas	K. Keel		Saare maakond, Mustjala vald, Ninase küla, Loigu-Ranna maaüksuse detailplaneering.	
A	34321/1	17.04.06	Planeeritud elektriühendus.	
I	2834	17.04.06		