

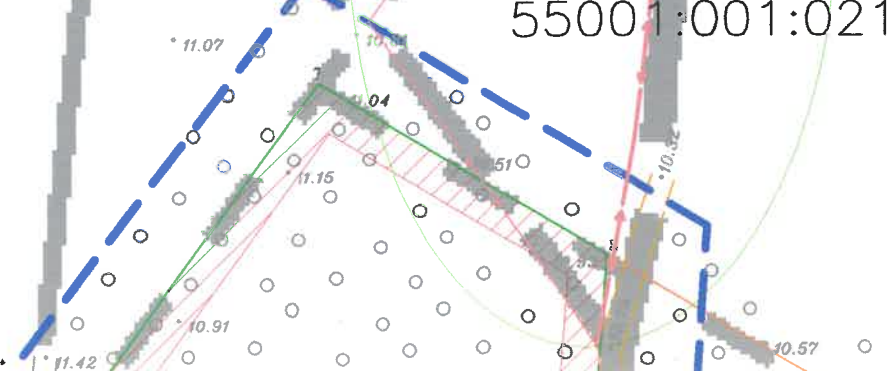
alajaam EE poole väljastatud andmete järgi

SEE OSA KAABLI RAJAMISE ASUKOHAST LEPITAKSE  
MAAOMANIKEGA KOKKU PROJEKTI KÄIGUS

Oe-Mardi  
55001:001:0337

Tamsi  
55001:001:0204

Panga  
55001:001:0211



55001:001:0197










MÄNNI  
15 228 m<sup>2</sup>

EP 100%  
8 m 1523 m<sup>2</sup> 3 tk

Kõstri

Vainu

• TINGMÄRGID

-  Tinglik planeeritava ala piir
-  Olemasolev kinnistu piir
-  Planeeritav kinnistu piir
-  Planeeritav hoonestusala
-  Ehituspiiranguala
-  Planeeritav hoone
-  Planeeritav madalpingekaabel
-  Planeeritav elektrijaotus- ja möötekapp
-  Planeeritav juurdepääs

*Koostöölehtidele  
skemaad  
13.04.07.  
/S. Kääril/*

M 1:2000

Metssea  
55001:001:0222

|  |                                 |                |                  |                           |
|--|---------------------------------|----------------|------------------|---------------------------|
| Objekt: KÕSTRI mü<br>Pulli küla,<br>Orissaare vald   | Joonis <b>ASUKOHA<br/>SKEEM</b> | Mõõt           | Stadium          | Töö nr                    |
|  |                                 | 1: 2000        | DETAILPLANEERING | 15-06                     |
| <br>RETTER EP 10314484-0001<br>Torn 7-1 Kuussaare<br>Tel 51 62088, fax 45 21081 | Projekteerija                   | Raivo Kaseorg  |                  | Kuupäev<br>aprill<br>2006 |
|  | Vastutav arhitekt               | Terje Truuma   |                  |                           |
|  | Vastutav insener                | Raivo Kaseorg  |                  | DP-3                      |
|  | Tellija                         | Pille Turovski |                  |                           |